

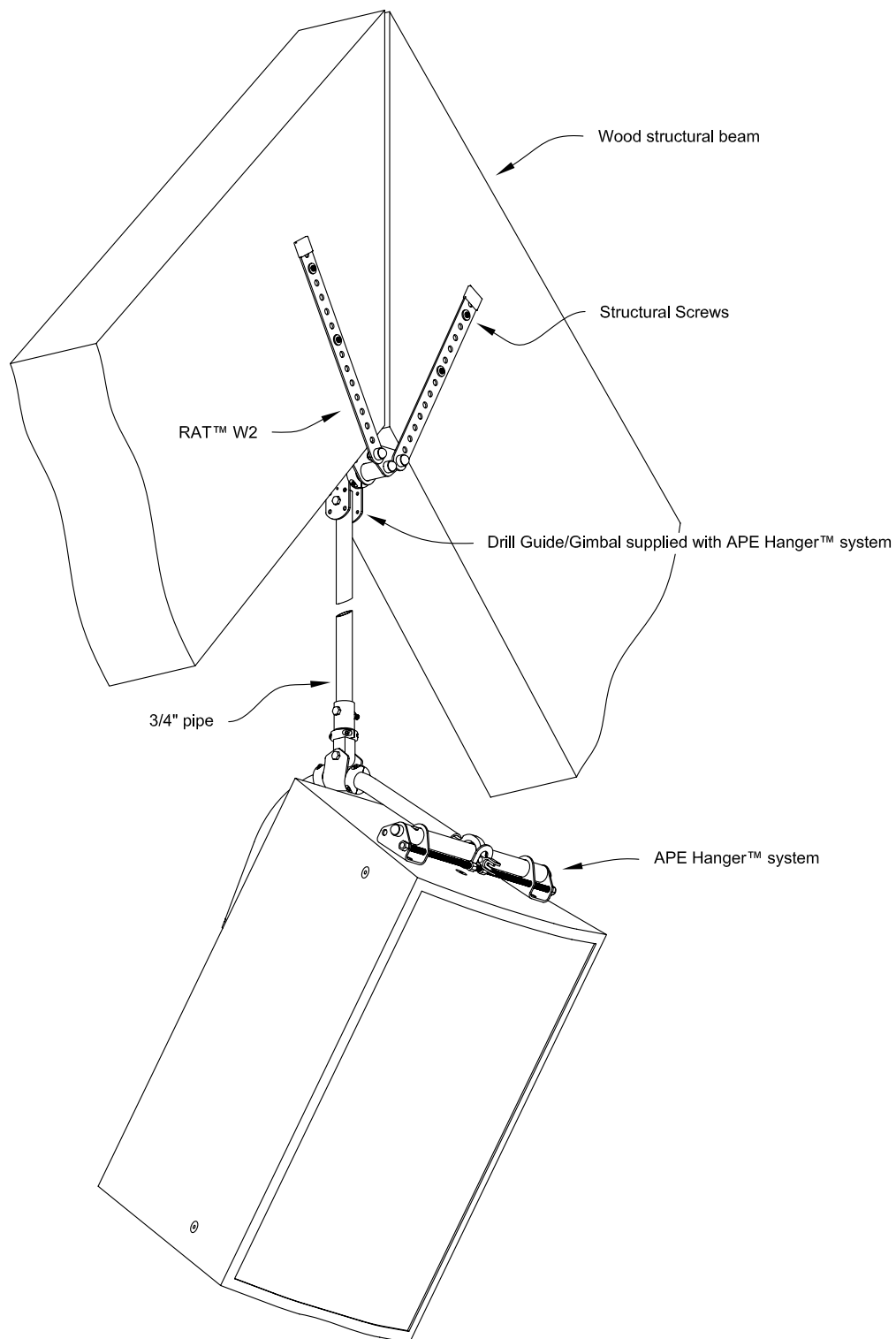
## SCENARIO W1

A rigging point is required on a wood structural beam.  
 The beam is free of obstructions at the desired location.  
 Our RAT™ W1 will be used to provide a connection point for our G5 or G6 Gimbal.

Hardware required:

- 1 RAT™ W1 (**R**igging **A**ttachment **T**echnique W1) Refer to the RATs™ instruction manual for details.
- 1 set of Structural Screws such as GRK's RSS™ series. Type, size, quantity and placement varies with application.
- 1 length of 3/4" schedule 40 steel pipe, ASTM A53 Grade A or better, if using our G5 Drill Guide/Gimbal.
- 1 APE Hanger™, U Tube™ or CHAIN Monkey™ speaker rigging system ordered with either the G5 or G6 Gimbal.
- 1 safety cable assembly. Hardware varies with application, see separate publication regarding safety cables.

**ALWAYS OBSERVE WORK LOAD LIMITS**



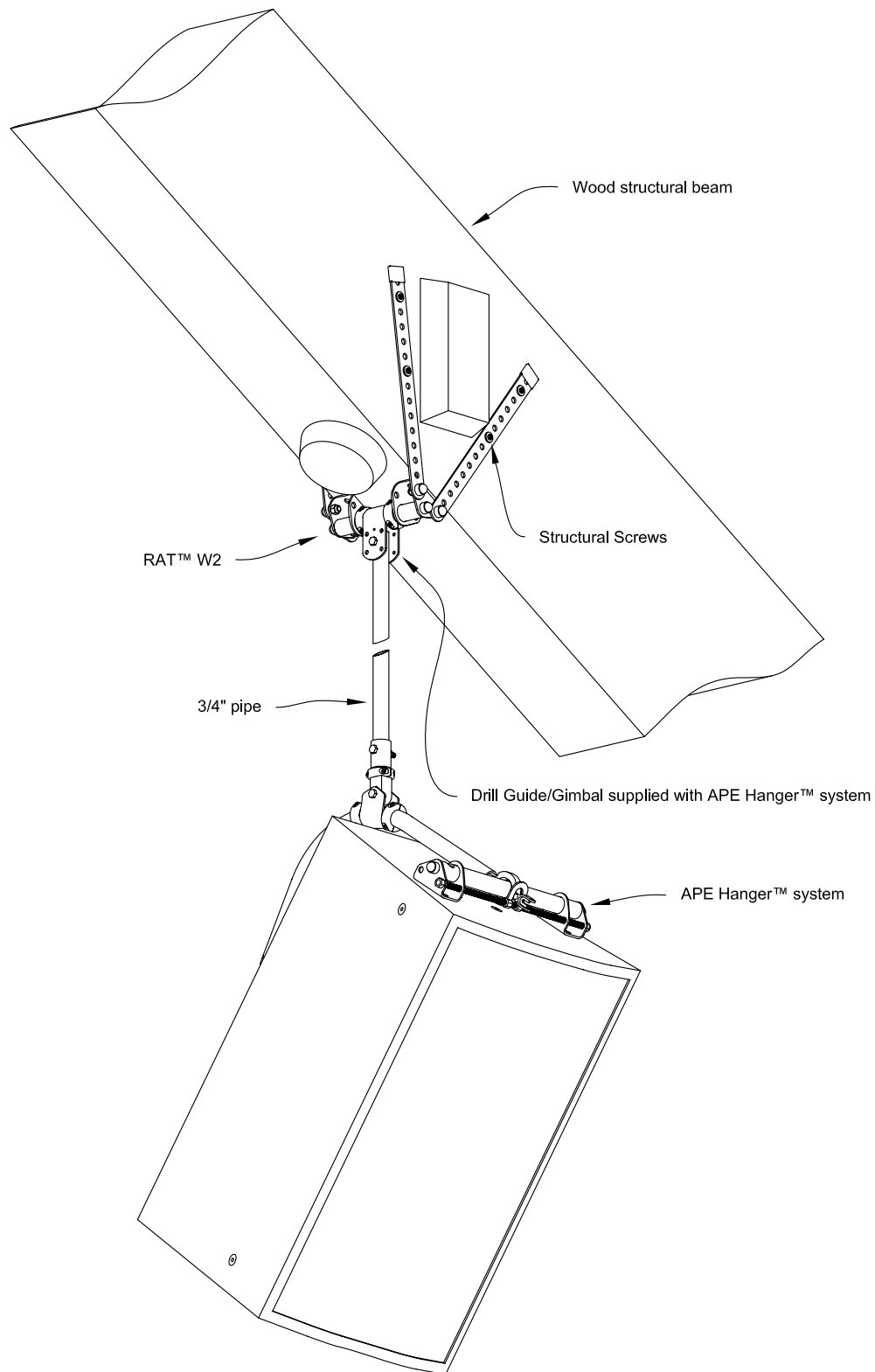
## SCENARIO W2

A rigging point is required at the intersection of two wood structural beams.  
 A gap or obstruction precludes the use of vertical attachments to the sides of the beams.  
 Our RAT™ W2 will be used to provide a connection point for our G5 or G6 Gimbal.

Hardware required:

- 1 RAT™ W2 (**R**igging **A**ttachment **T**echnique W2) Refer to the RATs™ instruction manual for details.
- 1 set of Structural Screws such as GRK's RSS™ series. Type, size, quantity and placement varies with application.
- 1 length of 3/4" schedule 40 steel pipe, ASTM A53 Grade A or better, if using our G5 Drill Guide/Gimbal.
- 1 APE Hanger™, U Tube™ or CHAIN Monkey™ speaker rigging system ordered with either the G5 or G6 Gimbal.
- 1 safety cable assembly. Hardware varies with application, see separate publication regarding safety cables.

**ALWAYS OBSERVE WORK LOAD LIMITS**



### SCENARIO W3

A rigging point is required on a wood structural beam.

Obstructions exist at the desired location.

Our RAT™ W2 will be used to provide a connection point for our G5 or G6 Gimbal.

Hardware required:

- 1 RAT™ W2 (**R**igging **A**ttachment **T**echnique W2) Refer to the RATs™ instruction manual for details.
- 1 set of Structural Screws such as GRK's RSS™ series. Type, size, quantity and placement varies with application.
- 1 length of 3/4" schedule 40 steel pipe, ASTM A53 Grade A or better, if using our G5 Drill Guide/Gimbal.
- 1 APE Hanger™, U Tube™ or CHAIN Monkey™ speaker rigging system ordered with either the G5 or G6 Gimbal.
- 1 safety cable assembly. Hardware varies with application, see separate publication regarding safety cables.

**ALWAYS OBSERVE WORK LOAD LIMITS**